

NURSING ECHOES.

Never have we received so many and such lovely cards, as reached us this Christmas and New Year from all over the world. So very nice to be remembered from afar. Canada, U.S.A., India, New Zealand and Japan have been more than kind, and our colleagues at home very generous. Many, many thanks to everyone. All good wishes are warmly reciprocated.

Miss M. Breay had a shower of cards and letters for which she also offers sincere gratitude.

On December 14th, the memorial to Queen Alexandra in St. Alban's English Church, Copenhagen, which was covered by the British and Danish flags, was unveiled by the King of Denmark and dedicated by the Bishop of Fulham, Anglican Bishop for North and Central Europe. The Queen and other members of the Danish Royal Family, Ministers of State, the Diplomatic Corps, and many others attended the service, at which King George was represented by Lord Shaftesbury. The memorial is a beautiful marble relief of the late Queen flanked by two stained-glass windows consisting each of three panels. The medallion is set in a wreath of dolphins carved from a single alabaster slab.

The inscription on the alabaster slab, under the medallion, as shown in the picture, is as follows:—

TO THE GLORY OF GOD AND IN PERPETUAL MEMORY OF ALEXANDRA PRINCESS OF DENMARK AND QUEEN OF ENGLAND THE FOUNDER OF THIS CHURCH, EQUALLY RENOWNED FOR HER CHARITY, HER BEAUTY AND HER VIRTUE AND FOR HER DEVOTED LOVE TO TWO COUNTRIES THAT OF HER BIRTH AND THAT OF HER ADOPTION.

The Bishop of Fulham, in his address, recalled that, in 1885, King Edward and Queen Alexandra, as Prince and Princess of Wales, laid the foundation-stone of that church, and again, in 1887, were present when his predecessor in office consecrated it. Queen Alexandra's interest in it never ceased. The memorials to King Edward and the Duke of Clarence added for her a sacredness to the church, in which she often worshipped.

Queen Alexandra, the Bishop continued, made no vain or selfish use of her great charms, for they were combined with a beauty of soul which showed itself in practical goodness and sympathy. Clergy, doctors and nurses had their difficult work lightened by her support. All who gave their lives to the service of the suffering or the aged or the poor, of helpless children or lonely widows, could rely confidently on an instant response from her loving heart.

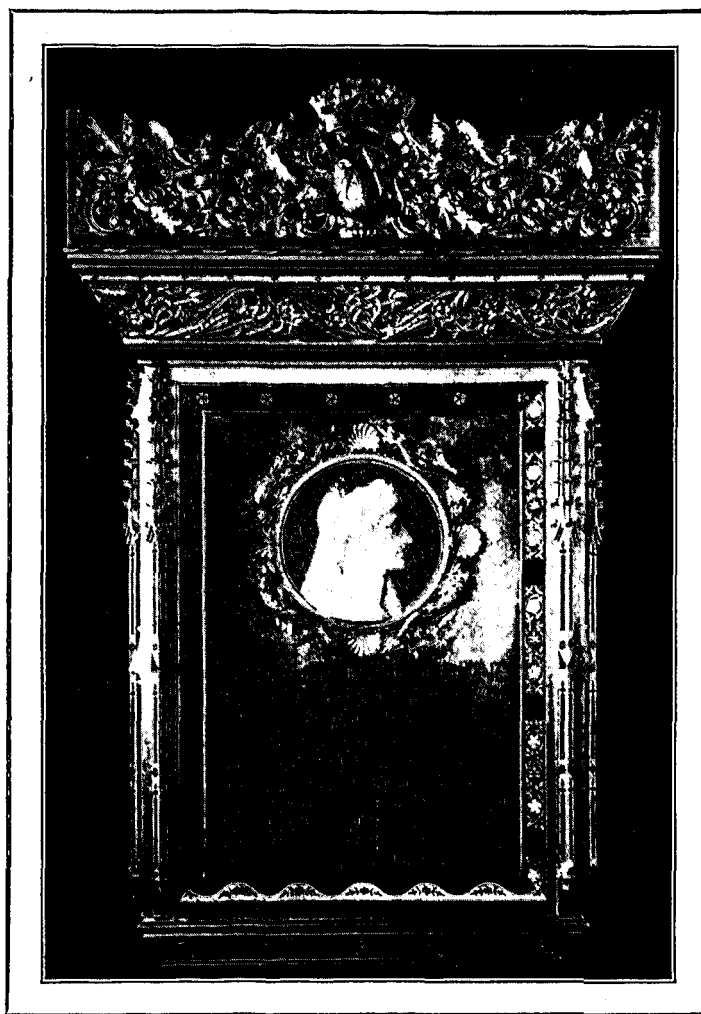
The design and execution of the memorial are the work of Mr. Geoffrey Webb of East Grinstead, the profile

portrait of the Queen inside the circle is by Sir Bertram Mackennal, R.A., and the photograph from which our picture is reproduced is by Mr. H. Connold, of East Grinstead.

The Gardens Committee of the Queen's Institute of District Nursing, in its report for the year 1929, states that through the kindness of many owners, 690 gardens were opened between the months of April and September; a large number of these were open on more than one occasion, bringing the total of openings up to 939. The committee greatly appreciates the general response from the owners and states that the sum of £7,765 was raised in aid of the work of the Queen's Institute of District Nursing and of district nursing throughout the country. It is of special interest to see that the King has sent £834 15s. from the opening of his gardens at Sandringham. The interest again taken in the scheme, not only in England and Wales but

also by overseas visitors, has been a great encouragement to the committee, and the scheme not only helps the work of district nursing, but is a source of pleasure to those who visit the gardens.

Those of us who were present at the Annual Dinner of the British College of Nurses in 1928 will remember how Lady Allardyce, wife of Sir William Allardyce, G.C.M.G., ex-Governor of Newfoundland, spoke to us of the work of the nurses in the frozen lonely spaces of Newfoundland, and made an appeal for nurses to join the Newfoundland Outport Nursing and Industrial



THE MEMORIAL TO HER LATE MAJESTY QUEEN ALEXANDRA IN THE CHURCH OF ST. ALBAN, COPENHAGEN.

[previous page](#)

[next page](#)